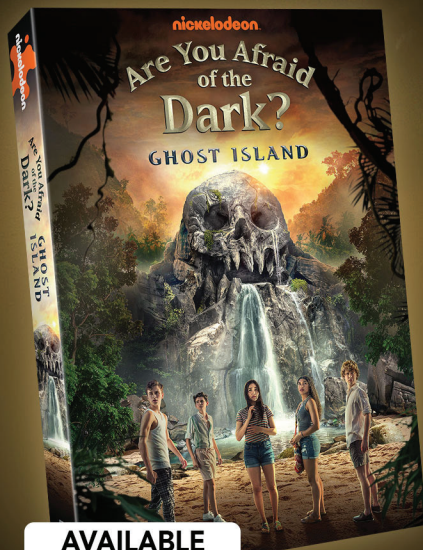


**nickelodeon.**

# Are You Afraid of the Dark?

GHOST ISLAND

# GHOST MIRROR CRAFT



## SUPPLIES

- Mirror (any size) • Paint brushes • Gold paint • Black stamp ink • Mod Podge • Transparent printer paper
- Spooky decor (spiders, skulls, webbing) • Ghost image to print — match size to mirror

## DIRECTIONS

Lay mirror down on newspaper. Paint mirror frame with two coats of gold paint, let dry. Once dry use hot glue gun to add spooky elements to frame (spiders, skull, number 13, etc.) Clean mirror, then using a paint brush or cotton ball, blot ink all over mirror for old fashion look. Let dry. Print black and white ghost image on transparent paper and cut around image. Use little dabs of mod podge on corners and place on mirror. Add more ink blotting stains as needed. Don't be afraid, it's time to hang or place your ghostly mirror!

**AVAILABLE  
NOW ON DVD**



